

Highly repeatable with superior material properties compared to casting. Fully-dense with no porosity, capable of internal channels and voids, no tooling required, and high throughput of 10-20,000+ parts/year.

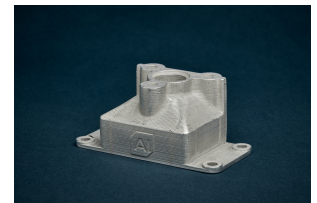
PHYSICAL PROPERTIES

Material Composition	Aluminum 6061
Heat Treatment	T6
Density	2.70 g/cm ³
Ultimate Tensile Strength	325 MPa
Yield Strength	268 MPa
Shear Strength	215 MPa
Elongation	16%
Hardness	120 Vickers
Thermal Conductivity	187 W/m-K

AUTOMOTIVE, HEAVY & INDUSTRIAL EQUIPMENT, AND THERMAL MANAGEMENT APPLICATIONS



Adapters



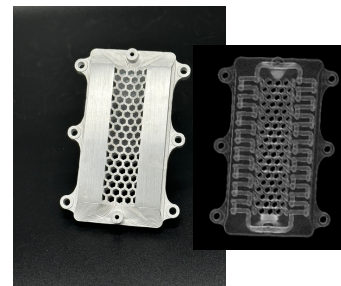
Connectors



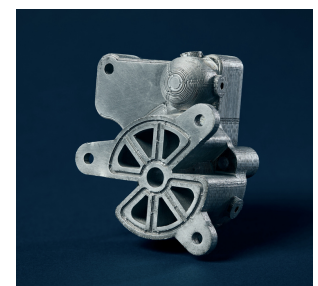
Badges



Housings

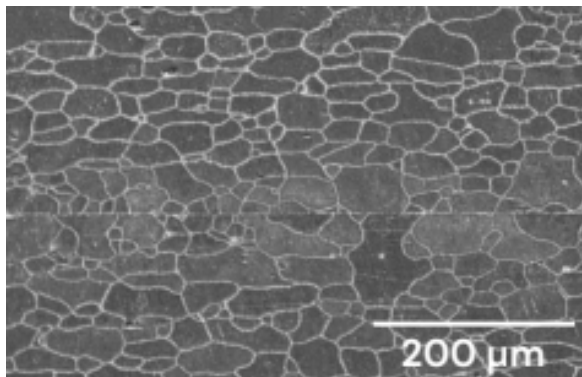


Cold Plates

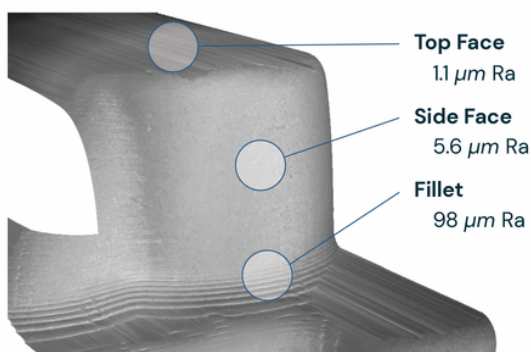


Manifolds

XZ PLANE CROSS-SECTION



AS-BUILT SURFACE ROUGHNESS



MECHANICAL PROPERTIES

